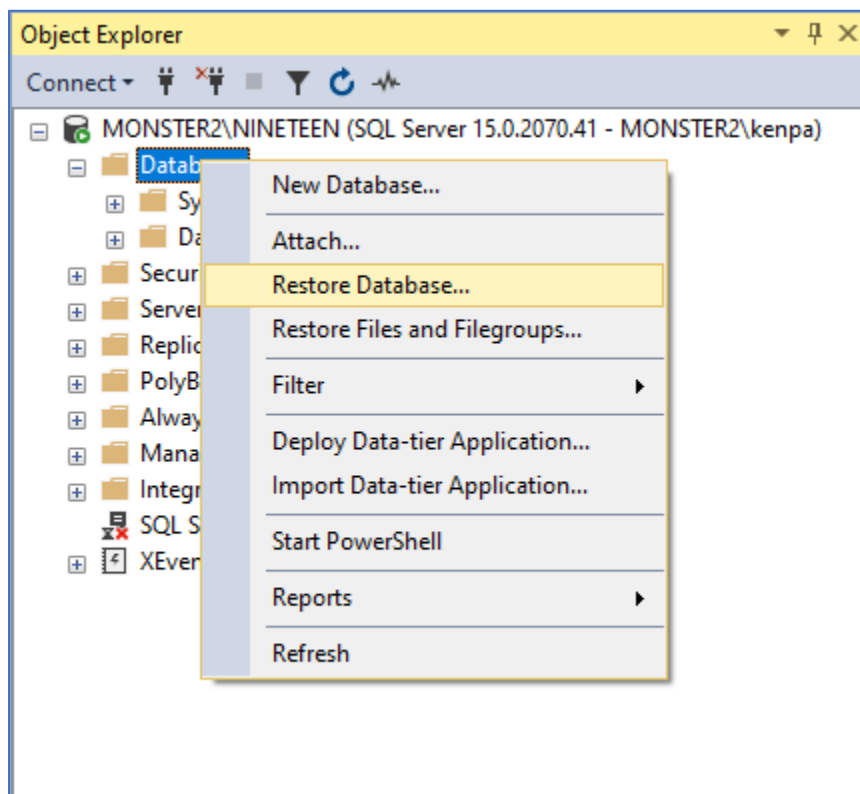


# NPI Database- Installation Instructions for SQL-Server using Sql Server Management Studio (SSMS).

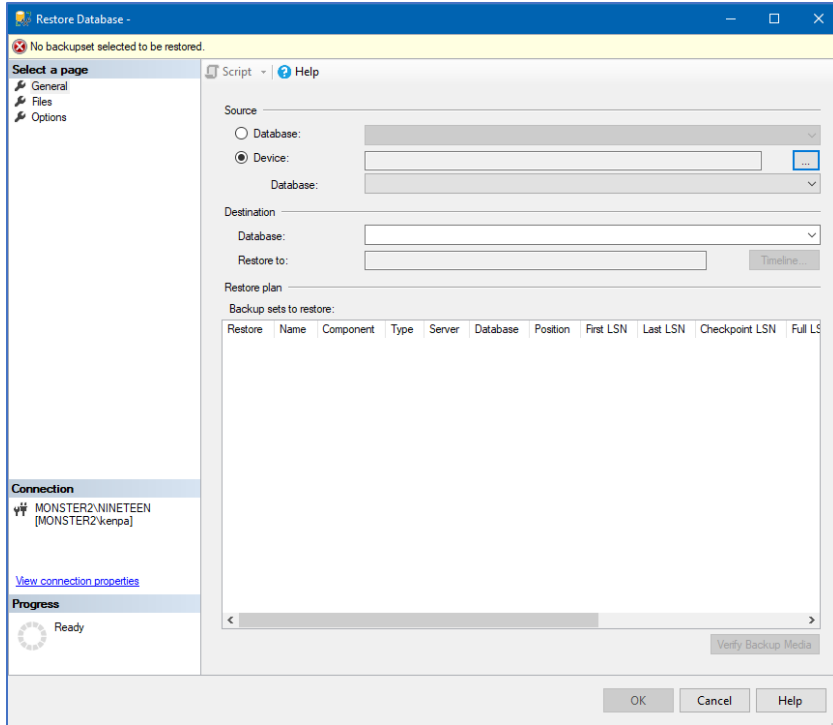
Method: Restore the File “NPI\_Standard.bak” without creating the Database/Schema first.

- Note: If you are using Sql-Server Express you have to upgrade to a free version of Sql-Server. Sql Server developer Version 2019 is free to download from Microsoft. Sql Server express version has a hard limit of 10Gb. of data space and will not import ~17Gb. of data.

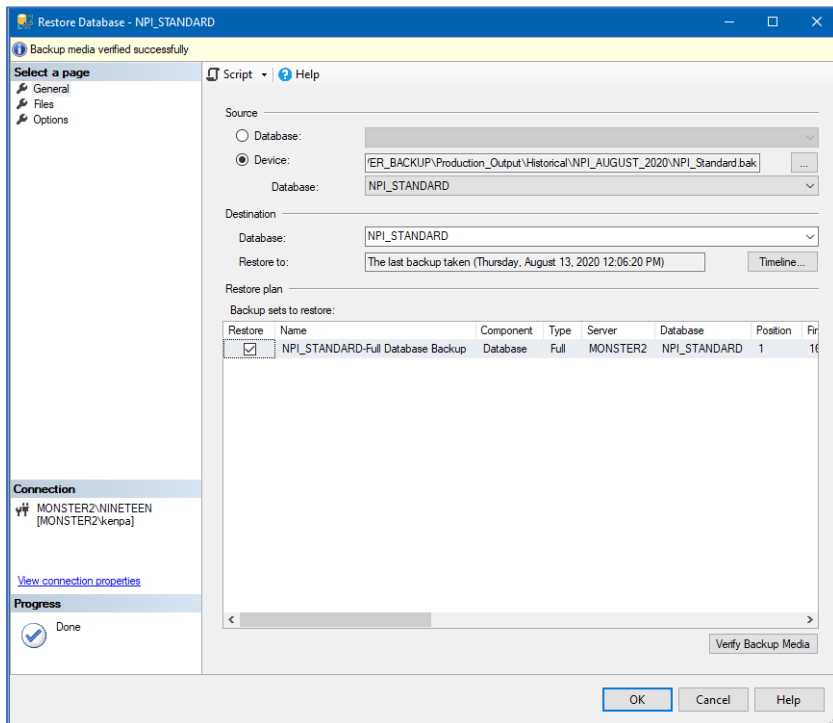
1. Open SSMS connect to an instance of Sql-Server.
2. Right click on “Databases” and choose “Restore Database”.



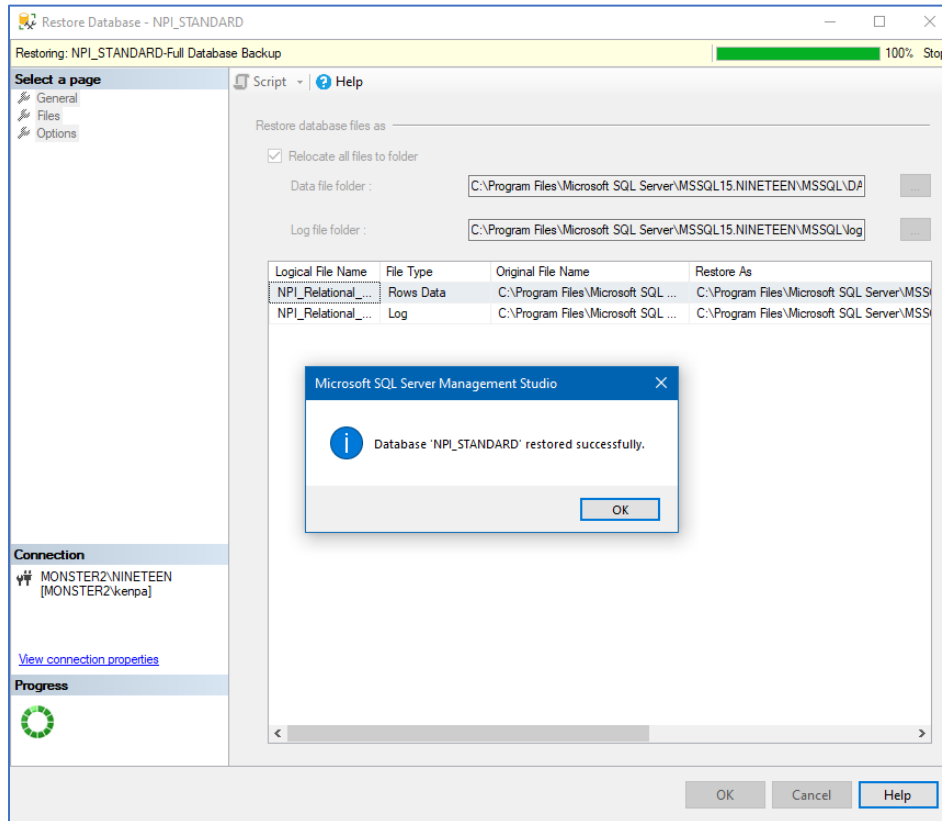
3. Click on “Device” and select the “NPI\_Standard.bak” from the downloaded .zip file.



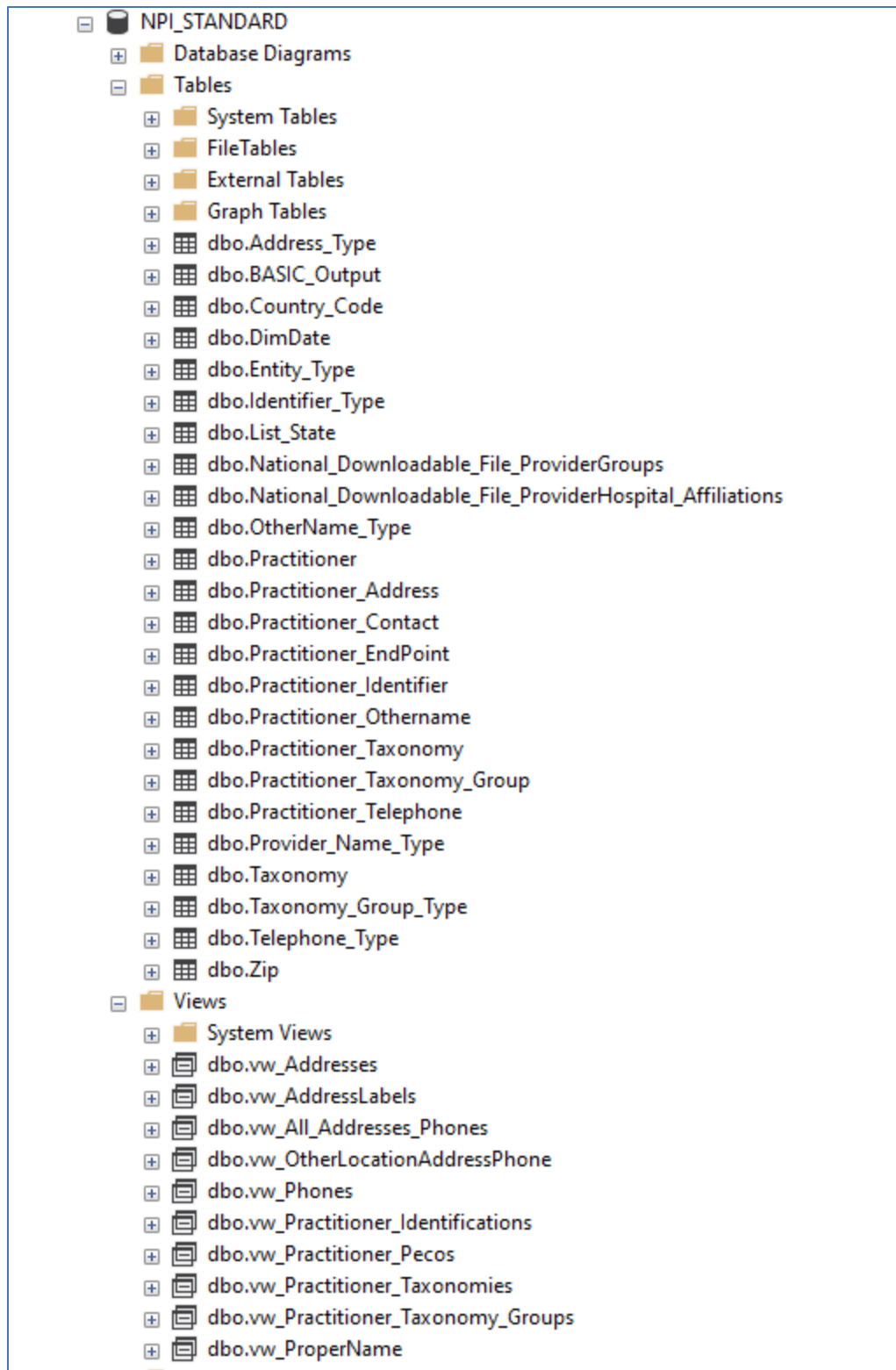
- By default the name of the database will be "NPI\_STANDARD". You may change that to whatever name you'd like. Click on "Verify Backup Media" to verify the .bak file hasn't been corrupted.



- Click on the Files page and choose either the default location or choose to move the files to a specific location. Click “OK” and you should end up with this:



- You should now be all set. Right Click on “Databases” and select “Refresh”.



7. Included in the .zip file is a file that you may utilize to create an Entity Relationship Diagram.
  - a. NPI\_ERD\_CREATION\_SCRIPT.sql is a Sql Script to populate the objects (no data) after you have created the "NPI\_STANDARD\_SCHEMA" database.